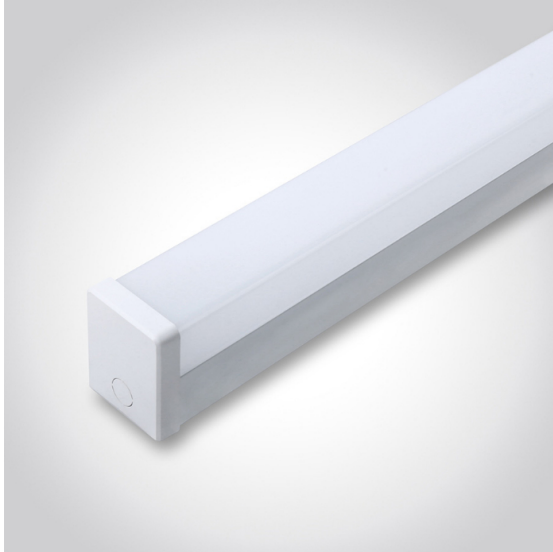
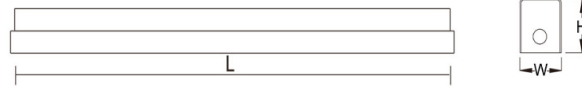


Products > IP20 Batten > IP20 Batten 1001.1013



## IP20 Batten 1001.1013

### Line Drawing



### Downloads



### Physical Specification

Code	1001.1013.01	1001.1013.02	1001.1013.03	1001.1013.04
Product Dimensions (mm)	L620xW69xH82mm	L1230xW69xH82mm	L1530xW69xH82mm	L1795xW69xH82mm
Finish/Color	Gloss White	Gloss White	Gloss White	Gloss White
Material	PC+iron	PC+iron	PC+iron	PC+iron
On/Off Switch	N	N	N	N
Cable Length (m)	N	N	N	N
Cable Spec.	N	N	N	N
Plug	N	N	N	N
Terminal Block	quick fit	quick fit	quick fit	quick fit
Accessories	screw,expansion bolts	screw,expansion bolts	screw,expansion bolts	screw,expansion bolts
Installation	Surface mounted	Surface mounted	Surface mounted	Surface mounted
Class	1	1	1	1

### Electrical Characteristics

Code	1001.1013.01	1001.1013.02	1001.1013.03	1001.1013.04
Total Power Consumption Wattage/On-Mode Power	20	40	50	60
Product Voltage	220-240	220-240	220-240	220-240
Hertz	50/60	50/60	50/60	50/60
IP Rating	IP20	IP20	IP20	IP20
Luminous Flux	2600	5200	6500	7800
Kelvin	3000K/4000K/6000K	3000K/4000K/6000K	3000K/4000K/6000K	3000K/4000K/6000K
LED Package Type	SMD	SMD	SMD	SMD
Lamp/Bulb Specification (if not LED)	N/A	N/A	N/A	N/A
Lamp/Bulb included?	N/A	N/A	N/A	N/A
SDCM	< 6	< 6	< 6	< 6
CRI	> 80	> 80	> 80	> 80
Power Factor	>0.5	>0.9	>0.9	>0.9
UGR	>19	>19	>19	>19

### Function

Code	1001.1013.01	1001.1013.02	1001.1013.03	1001.1013.04
Linkable	Y	Y	Y	Y
CCT function	Optional	Optional	Optional	Optional
Multi-section Power	Optional	Optional	Optional	Optional
Dimmable	Optional	Optional	Optional	Optional
Sensor	Optional	Optional	Optional	Optional
Emergency	Optional	Optional	Optional	Optional
Battery Spec.	N/A	N/A	N/A	N/A

## ABOUT US

Introduction  
Research And Development  
Technical Department  
Graphics Department  
Qualification

## PRODUCT

New arrival  
Waterproof  
Bulkhead / Flush  
Ceiling light  
Desk lamp  
Battens  
Panel / Frame  
Downlight  
Counter & Cabinet  
Work light & Flood light

## CONTACT

Email:reon@brightsources.cn  
Phone:+86-574-87309279  
Fax:+86 574 8730 3683