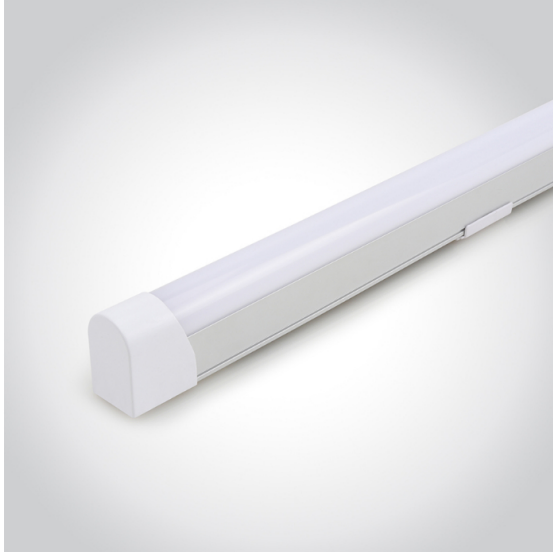
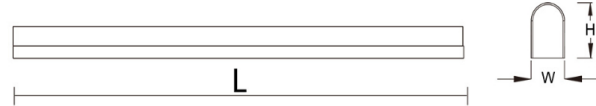


Products > IP20 Batten > IP20 Batten 1001.1006



IP20 Batten 1001.1006

Line Drawing



Downloads



Physical Specification

Code	1001.1006.01	1001.1006.02	1001.1006.03	1001.1006.04
Product Dimensions (mm)	L600xW29xH44mm	L1200xW29xH44mm	L1500xW29xH44mm	L1800xW29xH44mm
Finish/Color	Gloss White	Gloss White	Gloss White	Gloss White
Material	PC+Aluminium	PC+Aluminium	PC+Aluminium	PC+Aluminium
On/Off Switch	Optional	Optional	Optional	Optional
Cable Length (m)	N	N	N	N
Cable Spec.	N	N	N	N
Plug	N	N	N	N
Terminal Block	2-way Terminal Block	2-way Terminal Block	2-way Terminal Block	2-way Terminal Block
Accessories	screw,expansion bolts	screw,expansion bolts	screw,expansion bolts	screw,expansion bolts
Installation	Surface mounted	Surface mounted	Surface mounted	Surface mounted
Class	2	2	2	2

Electrical Characteristics

Code	1001.1006.01	1001.1006.02	1001.1006.03	1001.1006.04
Total Power Consumption Wattage/On-Mode Power	9	18	23	24
Product Voltage	220-240	220-240	220-240	220-240
Hertz	50/60	50/60	50/60	50/60
IP Rating	IP20	IP20	IP20	IP20
Luminous Flux	1170	2340	2990	3120
Kelvin	3000K/4000K/6000K	3000K/4000K/6000K	3000K/4000K/6000K	3000K/4000K/6000K
LED Package Type	SMD	SMD	SMD	SMD
Lamp/Bulb Specification (if not LED)	N/A	N/A	N/A	N/A
Lamp/Bulb included?	N/A	N/A	N/A	N/A
SDCM	< 6	< 6	< 6	< 6
CRI	> 80	> 80	> 80	> 80
Power Factor	>0.5	>0.5	>0.5	>0.5
UGR	>19	>19	>19	>19

Function

Code	1001.1006.01	1001.1006.02	1001.1006.03	1001.1006.04
Linkable	N/A	N/A	N/A	N/A
CCT function	N/A	N/A	N/A	N/A
Multi-section Power	N/A	N/A	N/A	N/A
Dimmable	N/A	N/A	N/A	N/A
Sensor	N/A	N/A	N/A	N/A
Emergency	N/A	N/A	N/A	N/A
Battery Spec.	N/A	N/A	N/A	N/A

ABOUT US

Introduction
Research And Development
Technical Department
Graphics Department
Qualification

PRODUCT

New arrival
Waterproof
Bulkhead / Flush
Ceiling light
Desk lamp
Battens
Panel / Frame
Downlight
Counter & Cabinet
Work light & Flood light

CONTACT

Email:reon@brightsources.cn
Phone:+86-574-87309279
Fax:+86 574 8730 3683