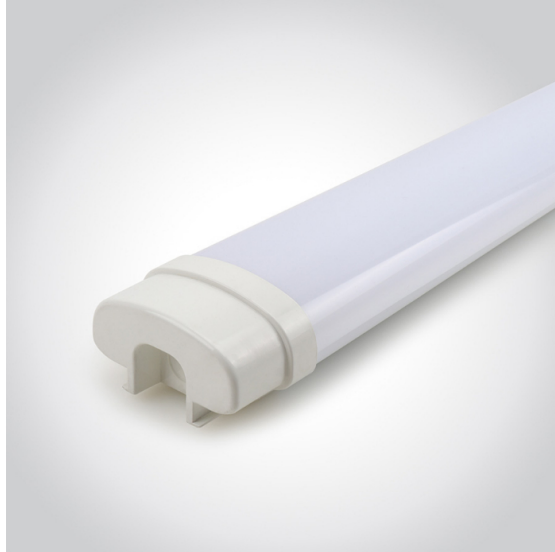


Products > IP65 Batten > IP65 Batten 1003.1012



## IP65 Batten 1003.1012

### Line Drawing



### Downloads



### Physical Specification

Code	1003.1012.01	1003.1012.02	1003.1012.03
Product Dimensions (mm)	L600xW50xH80mm	L1220xW50xH80mm	L1520xW50xH80mm
Finish/Color	Opal +Gloss White	Opal +Gloss White	Opal +Gloss White
Material	PC	PC	PC
On/Off Switch	N	N	N
Cable Length (m)	N	N	N
Cable Spec.	N	N	N
Plug	N	N	N
Terminal Block	quick fit	quick fit	quick fit
Accessories	screw,expansion bolts,fixing brackets	screw,expansion bolts,fixing brackets	screw,expansion bolts,fixing brackets
Installation	Surface mounted	Surface mounted	Surface mounted
Class	2	2	2

### Electrical Characteristics

Code	1003.1012.01	1003.1012.02	1003.1012.03
Total Power Consumption Wattage/On-Mode Power	18	36	45
Product Voltage	220-240	220-240	220-240
Hertz	50/60	50/60	50/60
IP Rating	IP65	IP65	IP65
Luminous Flux	1650	3300	4050
Kelvin	3000K/4000K/6000K	3000K/4000K/6000K	3000K/4000K/6000K
LED Package Type	SMD	SMD	SMD
Lamp/Bulb Specification (if not LED)	N/A	N/A	N/A
Lamp/Bulb included?	N/A	N/A	N/A
SDCM	< 6	< 6	< 6
CRI	> 80	> 80	> 80
Power Factor	>0.5	>0.9	>0.9
UGR	>19	>19	>19

### Function

Code	1003.1012.01	1003.1012.02	1003.1012.03
Linkable	Optional	Optional	Optional
CCT function	N	N	N
Multi-section Power	N	N	N
Dimmable	N	N	N
Sensor	N	N	N
Emergency	N	N	N
Battery Spec.	N/A	N/A	N/A
Others ( Solar etc...)	power cable is optional	power cable is optional	power cable is optional



#### ABOUT US

Introduction  
Research And Development  
Technical Department  
Graphics Department  
Qualification

#### PRODUCT

New arrival  
Waterproof  
Bulkhead / Flush  
Ceiling light  
Desk lamp  
Battens  
Panel / Frame  
Downlight  
Counter & Cabinet  
Work light & Flood light

#### CONTACT

Email:reon@brightsources.cn  
Phone:+86-574-87309279  
Fax:+86 574 8730 3683