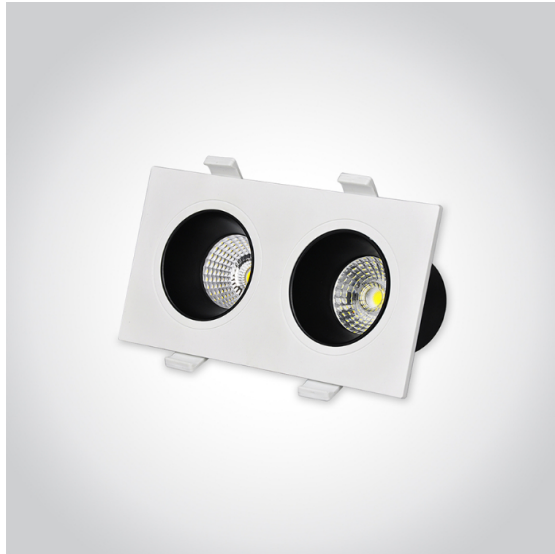
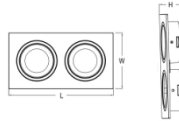


Products > Spot light > Spot light 1009.1007



Spot light 1009.1007

Line Drawing



Downloads



Physical Specification

Code	1009.1007.01	1009.1007.02
Product Dimensions (mm)	L173xW90xH30mm	L173xW90xH30mm
Finish/Color	Optional	Optional
Material	PC+ Aluminum	PC+ Aluminum
On/Off Switch	N	N
Cable Length (m)	12cm	12cm
Cable Spec.	H03VVH2-F 2x0.75mm ²	H03VV-F 2x0.75mm ²
Plug	N	N
Terminal Block	N	N
Installation	Recessed	Recessed
Class	2	2

Electrical Characteristics

Code	1009.1007.01	1009.1007.02
Total Power Consumption Wattage/On-Mode Power	2x5	2x7
Product Voltage	220-240	220-240
Hertz	50/60	50/60
IP Rating	IP20/IP54	IP20/IP54
Luminous Flux	500	900
Kelvin	3000K/4000K/6000K	3000K/4000K/6000K
LED Package Type	SMD	SMD
Lamp/Bulb Specification (if not LED)	LED light source / LED GU10 bulb	LED light source / LED GU10 bulb
Lamp/Bulb included?	N	N
SDCM	< 6	< 6
CRI	> 80	> 80
Power Factor	>0.5	>0.5
UGR	>19	>19

Function

Code	1009.1007.01	1009.1007.02
Linkable	N	N
CCT function	Optional	Optional
Multi-section Power	N	N
Dimmable	N	N
Sensor	N	N
Emergency	N	N
Battery Spec.	N/A	N/A

ABOUT US

Introduction
Research And Development
Technical Department
Graphics Department
Qualification

PRODUCT

New arrival
Waterproof
Bulkhead / Flush
Ceiling light
Desk lamp
Battens
Panel / Frame
Downlight
Counter & Cabinet
Work light & Flood light

CONTACT

Email:reon@brightsources.cn
Phone:+86-574-87309279
Fax:+86 574 8730 3683